

॥ राष्ट्रदेवो भवः ॥

 **Falcon**<sup>™</sup>  
WORLD CLASS PIPES



**Falcon Pipes Pvt. Ltd.**



## COMPANY PROFILE

Established in the year 2009, Falcon Pipes Pvt. Ltd. has emerged as a renowned, admired and competent name amongst dealers and customers of the piping products.

We continuously strive to push the frontiers of the piping industry, We are managed by visionary leaders, experienced administrators, hi-skilled and qualified engineers.

Falcon a value driven organization based on strong foundation of reliability, innovation and pioneering technology working towards the ultimate core focus of maximizing highly delighted customers worldwide.

## MISSION

Falcon a value driven organization based on strong foundation of reliability, innovation and pioneering technology working towards the ultimate core focus of maximizing highly delighted customers worldwide.

## VISION

To become globally most preferred supplier of uPVC Column pipes, HDPE pipes, PVC Agri. pipes, uPVC plumbing pipes & fittings, CPVC pipes & fittings and casing pipes. To be recognize as a technical leader in the world of pipes industry.

# INDEX

01	uPVC Column Pipes & Accessories	01-05	06	SWR Pipes & Fittings	10
02	uPVC Rigid / Pressure Pipes	06	07	HDPE Pipes	11
03	uPVC Casing Pipes	07	08	HDPE Sprinkler Pipes & Fittings	12
04	uPVC Plumbing Pipes & Fittings	08			
05	CPVC Pipes & Fittings	09			



# uPVC Column Pipes & Accessories





### Features :

- ▶ Made up of High Quality Virgin PVC raw material
- ▶ Square threads of pipes are of best design and manufactured in CNC machine in order to provide accuracy and quality
- ▶ Square thread gives a very high load holding capacity
- ▶ The "O" ring is made up of high efficient rubber provide leak proof joints
- ▶ The thick and thin portion of pipes has been developed to provide higher strength to pipes
- ▶ Rigid with high impact resistance

### Applications :

- ▶ Suitable for rising water using submersible pumps in Borewell
- ▶ Suitable for Jet Pump for irrigation and domestic usage
- ▶ Excellent alternative of MS, ERW, HDPE and SS Pipes
- ▶ Ideally suitable for Normal, Cold, Clean, Salty and Sandy aggressive water
- ▶ Suitable for use as a movable pumping system

### Properties :

- ▶ Odourless & Hygienic, so suitable for potable water supply
- ▶ High Izod impact and tensile strength
- ▶ High torque resistant
- ▶ 100% leak proof with high flow rate
- ▶ Economically satisfied as it is cost effective
- ▶ Minimum Friction loss
- ▶ Light in weight hence handling, transportation and installation becomes much easier
- ▶ Non-corrosive, seamless, strong and resilient
- ▶ Rigid in nature with longer life
- ▶ 25% higher discharge compare to G.I. Pipes
- ▶ Low installation cost

Product name : uPVC Column Pipes / Drop Pipes / Riser Pipes / Borehole Pipes

Range : 1" to 5" Outer Diameter ( 25 mm to 125 mm Nominal Diameter)

Colour : White

Length : Available in 3 meter length

Types : (1) Bell Type  
(2) Socket  
(3) Medium  
(4) Standard  
(5) Heavy  
(6) Super Heavy



### In-Built Automatic Locking System

- ▶ In this, the coupler is fitted to the pipe through special automatic locking system to prevent thread slippage during assembly and dismantling process of pipes
- ▶ The advantage of this system is, it cannot be unthreaded and dismantled and provide rigid locking
- ▶ It also increases the life of the submersible pump

### Square Threads

- ▶ The coupler and pipe joints have square threads machined using CNC machine to maintain accuracy for taking high load with no slippage of threads
- ▶ Due to this, it is very easy to assemble and dismantle column pipe as well as provide extra strength to the pipe
- ▶ It reduces the loosening of joints during ON/OFF of submersible pumpset
- ▶ This unique square thread provide sufficient grip and additional strength against tensile load

### Bi-Axial Orientation

- ▶ Specially designed Bi-Axial design tools in column pipe extrusion process to ensure the PVC molecular chain gets linear and diametrically oriented which gives higher impact strength to the pipes

### Thick And Thin Portion of Pipe

- ▶ The technique for making column pipes thicker in the threading end to compensate for material due to threads. The residual thickness in the end part after removal of thread is the same as barrel thickness, therefore the pipe strength remains the same
- ▶ This technique saves raw material consumption also provides much higher strength to the pipes
- ▶ This portion has been developed in order to absorb the full torque produced from motor, thus resulting in long life

### uPVC Column Pipe Accessories

Adaptor Set	Pump Guard Set & Lowering JIG	Belt Wrench	Sigri
			


**Technical Parameters**

Size		T echnical Parameters	Medium	Standard	Heavy	Super Heavy
Inch	MM					
1"	33mm	End Wall Thickness ( Average )	4.90	-	-	-
		Pressure Kg/cm <sup>2</sup>	21	-	-	-
		Ultimate Breaking Load	1350	-	-	-
		Loring Depth Upto In Feet	550	-	-	-
1.25"	42mm	End Wall Thickness ( Average )	4.40	4.90	6.10	-
		Pressure Kg/cm <sup>2</sup>	21	26	35	-
		Ultimate Breaking Load	2000	2300	2700	-
		Loring Depth Upto In Feet	550	700	1200	-
1.50"	48mm	End Wall Thickness ( Average )	4.70	6.00	6.40	8.10
		Pressure Kg/cm <sup>2</sup>	21	26	35	40
		Ultimate Breaking Load	2400	2650	3000	3900
		Loring Depth Upto In Feet	550	700	1200	1300
2.00"	60mm	End Wall Thickness ( Average )	5.50	6.40	7.40	8.40
		Pressure Kg/cm <sup>2</sup>	13	21	28	35
		Ultimate Breaking Load	2500	3000	4000	4800
		Loring Depth Upto In Feet	300	550	750	1200
2.25"	63mm	End Wall Thickness ( Average )	-	6.40	7.35	9.85
		Pressure Kg/cm <sup>2</sup>	-	21	27	35
		Ultimate Breaking Load	-	3600	4300	4900
		Loring Depth Upto In Feet	-	550	750	1200
2.50"	75mm	End Wall Thickness ( Average )	5.35	6.65	8.35	11.40
		Pressure Kg/cm <sup>2</sup>	10	16	26	35
		Ultimate Breaking Load	3300	4600	6300	7000
		Loring Depth Upto In Feet	300	500	750	1200
3.00"	88mm	End Wall Thickness ( Average )	6.40	6.90	8.90	12.40
		Pressure Kg/cm <sup>2</sup>	12	17	26	35
		Ultimate Breaking Load	4400	5000	6450	6900
		Loring Depth Upto In Feet	350	500	700	1200
4.00"	113mm	End Wall Thickness ( Average )	6.90	8.70	12.90	15.00
		Pressure Kg/cm <sup>2</sup>	11	16	27	35
		Ultimate Breaking Load	4900	6900	8400	11000
		Loring Depth Upto In Feet	300	500	750	1200
5.00"	140mm	End Wall Thickness ( Average )	-	10.90	14.90	17.8
		Pressure Kg/cm <sup>2</sup>	-	16	26	35
		Ultimate Breaking Load	-	9800	13000	17000
		Loring Depth Upto In Feet	-	500	700	1200

\*Technical Specification are Subject to Change Without Prior Notice.

### CAST IRON ADAPTER BOTTOM (Heavy)



**CATEGORY :**  
Upvc Column Pipe Accessories

**TECHNICAL DETAILS :**

Metal : Cast Iron  
 Diameter : 1" to 5"  
 Finishing : Colour Coated  
 Thickness : 7 mm to 12 mm  
 Connection : Square Thread / Pipe Thread

**APPLICATION :** Connection of Submersible Pumps Set and Column Pipe.

**DESCRIPTION :** Cast Iron Adapter is very compactible fittings for all those column pipe fittings where it needs. special square thread design.

**WHY FALCON :** Easy to Use, Excellent Quality, Robust and Tensile

### CAST IRON ADAPTER TOP HEAVY (Double Clamp)



**CATEGORY :**  
Upvc Column Pipe Accessories

**TECHNICAL DETAILS :**

Metal : Cast Iron  
 Diameter : 1" to 5"  
 Finishing : Colour Coated  
 Thickness : 7 mm to 12 mm  
 Connection : Square Thread / Pipe Thread

**APPLICATION :** Connection of Column Pipes and Water Flow Output Accessories.

**DESCRIPTION :** Cast Iron Adapter is Very Compactible Fittings for all those Column Pipe Fittings where it needs. Special Square Thread Design.

**WHY FALCON :** Easy to Use, Excellent Quality, Robust and Tensile

### STAINLESS STEEL 304 ADAPTER BOTTOM (Heavy)



**CATEGORY :**  
Upvc Column Pipe Accessories

**TECHNICAL DETAILS :**

Metal : Stainless Steel  
 Diameter : 1" to 5"  
 Finishing : Glossy / Matte Steel Finish  
 Thickness : 5 mm to 9 mm  
 Connection : Square Thread / Pipe Thread

**APPLICATION :** Connection of Submersible Pump Set and Column Pipes.

**DESCRIPTION :** Stainless Steel Adapter is Very Compactible Fittings for all those Column Pipe Fittings where it needs. Special Square Thread Design. Stainless Steel Material Protect against Corrosion.

**WHY FALCON :** Easy to Use, Excellent Quality, Robust and Tensile

### STAINLESS STEEL 304 ADAPTER TOP HEAVY (Double Clamp)



**CATEGORY :**  
Upvc Column Pipe Accessories

**TECHNICAL DETAILS :**

Metal : Stainless Steel  
 Diameter : 1" to 5"  
 Finishing : Glossy / Matte Steel Finish  
 Thickness : 5 mm to 9 mm  
 Connection : Square Thread / Pipe Thread

**APPLICATION :** Connection of Submersible Pumps Set and Column Pipes

**DESCRIPTION :** Stainless Steel Adapter is Very Compactible Fittings for all those Column Pipe Fittings Where it Needs. Special Square Thread Design. Stainless Steel Material Protect against Corrosion.

**WHY FALCON :** Easy to Use, Excellent Quality, Robust and Tensile



### PUMP GUARD MILD STEEL FLANGE



**CATEGORY :**

Upvc Column Pump Guard Accessories

**TECHNICAL DETAILS :**

Metal : Mild Steel  
 Diameter : 1" to 5"  
 Finishing : Colour Coated  
 Thickness : 8 mm to 12 mm  
 Connection : Stud Clamp type

**APPLICATION :** Connection of Bottom Adapter and Upvc Pump Guard.

**DESCRIPTION :** Mild Steel Flange Ultimately Leads to Extra Safety of the Pump and Prevents Accidental Loss of Pump and Pipe During Dismantling for the Purpose of Maintenance of the Pump.

**WHY FALCON :** Easy to Use, Excellent Quality, Robust and Tensile

### PUMP GUARD STAINLESS STEEL 304 FLANGE



**CATEGORY :**

Upvc Column Pump Guard Accessories

**TECHNICAL DETAILS :**

Metal : Stainless Steel  
 Diameter : 1" to 5"  
 Finishing : Glossy / Matte Steel Finish  
 Thickness : 8 mm to 12 mm  
 Connection : Stud Clamp Type

**APPLICATION :** Connection of Bottom Adapter and Upvc Pump Guard.

**DESCRIPTION :** Stainless Steel 304 Flange Ultimately Leads to Extra Safety of the Pump and Prevents Accidental Loss of Pump and Pipe During Dismantling for the Purpose of Maintenance of the Pump. Protect Against Corrosion.

**WHY FALCON :** Easy to Use, Excellent Quality, Robust and Tensile

### PUMP GUARD STAINLESS STEEL 202 ROD



**CATEGORY :**

Upvc Column Pump Guard Accessories

**TECHNICAL DETAILS :**

Metal : Stainless Steel 202  
 Diameter : 17" to 26"  
 Finishing : Glossy / Matte Steel Finish  
 Thickness : 12 mm  
 Connection : Stud Clamp Type

**APPLICATION :** Connection of Bottom Adapter and Upvc Pump Guard.

**DESCRIPTION :** Stainless Steel 202 Rod Ultimately Leads to Extra Safety of the Pump and Prevents Accidental Loss of Pump and Pipe During Dismantling for the Purpose of Maintenance of the Pump. Protect Against Corrosion.

**WHY FALCON :** Easy to Use, Excellent Quality, Robust and Tensile

### MILD STEEL LOWERING JIG (Sigri) (Heavy / Super Heavy)



**CATEGORY :**

Upvc Column Pipe Accessories

**TECHNICAL DETAILS :**

Metal : Mild Steel  
 Diameter : 1" to 5"  
 Finishing : Colour Coated  
 Thickness : 6 mm to 12 mm  
 Connection : Square Thread / Hook Type

**APPLICATION :** For Lowering or Extracting the Riser / Drop Pipes from Borewell

**DESCRIPTION :** Mild Steel Lowering Jig is Very Compactible Fittings for all those Column Pipe where it needs. for Lowering of Submersible Pump and Pipe.

**WHY FALCON :** Easy to Use, Excellent Quality, Robust and Tensile

### BELT SPANNER / BELT WRENCH



**CATEGORY :**

Upvc Column Pipe Accessories

**TECHNICAL DETAILS :**

Metal : C.I. / M.S. / Nylon Belt  
 Diameter : 1" to 5"  
 Finishing : Colour / Zinc Coated  
 Thickness : -  
 Connection : -

**APPLICATION :** Spanner Belt is Very Easy Usable for Upvc Pipe without any Damages. And with Minimum Pressure.

**DESCRIPTION :** Spanner Belt Assembled by Three Parts where Use Cast Iron, Belt and Mild Steel Rod. Connection for Pipe Fitting.

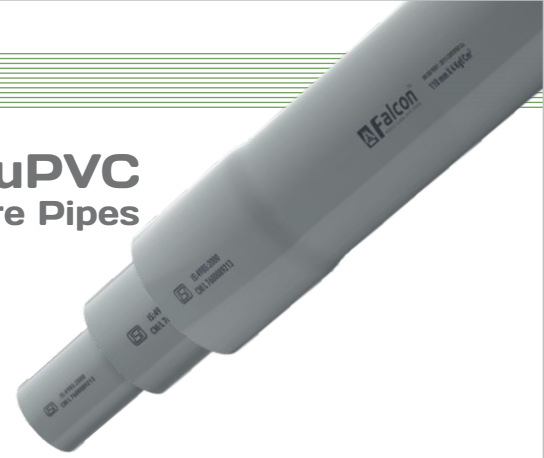
**WHY FALCON :** Easy to Use, Excellent Quality, Robust and Tensile

# uPVC

## Rigid / Pressure Pipes



## uPVC Rigid / Pressure Pipes



### Properties :

- ▶ Suitable for potable water supply
- ▶ Light weight makes easy handling, transportation & installation
- ▶ Seamless, strong & resilient
- ▶ Odorless and hygienic for potable water
- ▶ Resistant to rusting and weathering
- ▶ Energy efficient due to low pressure losses
- ▶ High flow characteristics

### Applications :

- ▶ Water supply
- ▶ Lift irrigation
- ▶ Main and sub main line for Drip and Sprinkler irrigation
- ▶ Fertilizer, lifting, transporting, conveying, distributing, disposing and tapping water
- ▶ Urban and rural areas drinking water scheme

Product Name : Unplasticized Polyvinyl Chloride pipe for potable water supplies (uPVC Pipes)  
 Range : 63 mm to 315 mm Outer Diameter  
 Pressure Rating : **Class - 1 (2.5 kg)**  
                           **Class - 2 (4 kg)**  
                           **Class - 3 (6 kg)**  
 Standard : IS 4985 and DIN 8061& 8062  
 Colour : Light Grey  
 Length : Available in 6 meter  
 Types : (1) Plain ended (2) Socketed pipe for elastomeric sealing ring (3) Socketed pipe for solvent cement jointing

### Technical Parameters

Nominal Diameter		Mean Outside Diameter		Outside Diameter at any Point		Wall Thickness									
						Class - 1 PN-2.5		Class - 2 PN-4		Class - 3 PN-6		Class - 4 PN-8		Class - 5 PN-10	
inch	mm	Min.	Max.	Min.	Max.	Min.	Max.	Min.	Max.	Min.	Max.	Min.	Max.	Min.	Max.
2"	63	63	63.3	62.2	63.8	-	-	1.5	1.9	2.2	2.7	2.8	3.3	3.5	4.1
2½"	75	75	75.3	74.1	75.9	-	-	1.8	2.2	2.6	3.1	3.4	4.0	4.2	4.9
3"	90	90	90.3	89.9	91.1	1.3	1.7	2.1	2.6	3.1	3.7	4.0	4.6	5.0	5.7
4"	110	110	110.4	108.6	111.4	1.6	2.0	2.5	3.0	3.7	4.3	4.9	5.6	6.1	7.1
4½"	125	125	125.4	123.5	126.5	1.8	2.2	2.9	3.4	4.3	5.0	5.6	6.4	6.9	8.0
5"	140	140	140.5	138.3	141.7	2.0	2.4	3.2	3.8	4.8	5.5	6.3	7.3	7.7	8.9
6"	160	160	160.5	158.0	162.0	2.3	2.8	3.7	4.3	5.4	6.2	7.2	8.3	8.8	10.2
7"	180	180	180.6	177.8	182.2	2.6	3.1	4.2	4.9	6.1	7.1	8.0	9.2	9.9	11.4
8"	200	200	200.6	197.6	202.4	2.9	3.4	4.6	5.3	6.8	7.9	8.9	10.3	11.0	12.7
9"	225	225	225.7	222.3	227.7	3.3	3.9	5.2	6.0	7.6	8.8	10.0	11.5	12.4	14.3
10"	250	250	250.8	247.0	253.0	3.6	4.2	5.7	6.5	8.5	9.8	11.2	12.9	13.8	15.9
11"	280	280	280.9	276.6	283.4	4.1	4.8	6.4	7.4	9.5	11.0	12.5	14.4	15.4	17.8
12"	315	315	316.0	311.2	318.8	4.6	5.3	7.2	8.3	10.7	12.4	14.0	16.1	17.3	19.9

# uPVC Casing Pipes

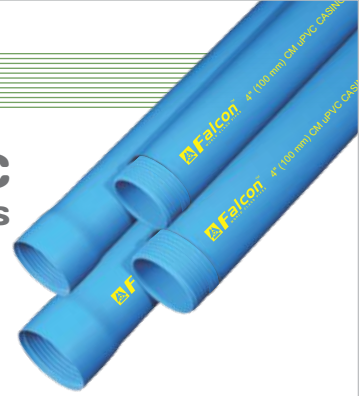


**Falcon**<sup>TM</sup>  
WORLD CLASS uPVC PIPES

CS 150 mm (6" NB)  
PVC-U CASING PIPE

IS 12818-2010  
CML NO

## uPVC Casing Pipes



### Properties :

- ▶ Suitable for bore or tube well supplies
- ▶ Light weight offers total economy in handling, transportation & installation
- ▶ Seamless, strong & resilient
- ▶ Longer lasting PVC is free from weakness caused by formation, rusting and weathering.
- ▶ Economic
- ▶ Durable and maintenance free
- ▶ Maximum ambient temperature : 70° C
- ▶ Maximum installation depth - 80m to 250m
- ▶ It can be installed Vertical inclined

### Applications :

- ▶ Domestic wells, irrigation wells, industrial wells and mines
- ▶ Waste water (drainage & sewage)
- ▶ Urban and rural areas drinking water scheme

Product name : uPVC Casing Pipes  
 Range : 100 mm to 300 mm Nominal Diameter  
 Standard : IS 12818 : 2010  
 Colour : Regular Blue  
 Length : Available in 3 meter  
 Grade : CS & CM  
 Types : Socketed pipe with thread ended

### Plain Pipes

These can be used as extension pipes to screen pipe. They are of two types:

- ▶ C. S. Pipe : For shallow-depth (up to 80m) red colour code.
- ▶ C. M. Pipe : For medium-depth (up to 250m) yellow colour code

### Screen Pipes

These pipes may be plain or ribbed. They have transverse slots and are mainly used in bore wells, from the water-table Level onwards.

### Ribbed Screen Pipes

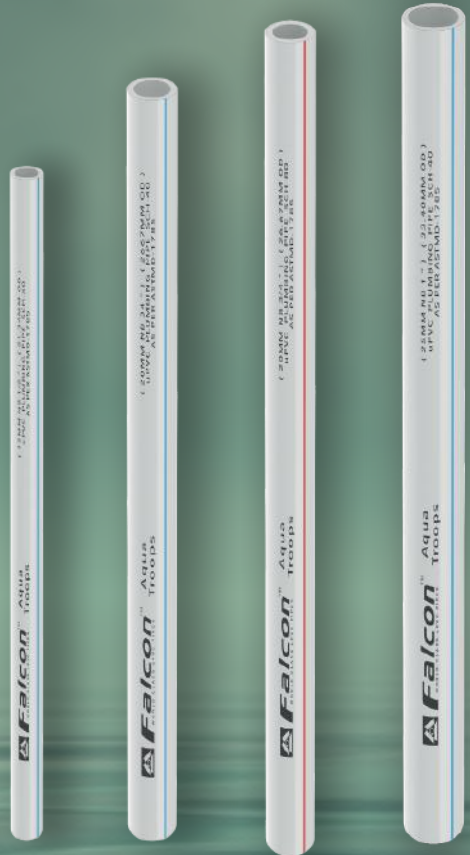
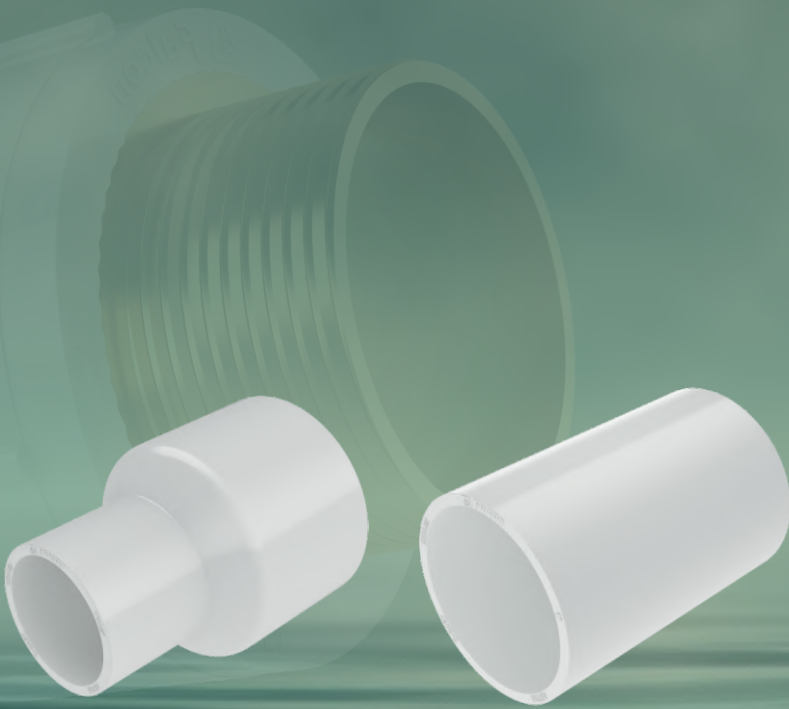
These pipes have longitudinal ribs and transverse slots. The ribs keep granulated soil away from the slots, and increase the permeability rating to more than double when compared to plain screen pipes.

### Technical Parameters

As Per IS : 12818 : 2010 

Nominal Diameter		Mean Outer Diameter (mm)		Grade			
				Wall Thickness (mm)			
inch	mm	Min.	Max.	CM		CS	
				Min.	Max.	Min.	Max.
4"	100	113.00	113.30	5.0	5.7	-	-
4½"	115	125.00	125.30	5.0	5.7	-	-
5"	125	140.00	140.40	6.5	7.3	-	-
6"	150	165.00	165.40	7.5	8.5	5.7	6.5
7"	175	200.00	200.50	8.8	9.8	7.0	7.8
8"	200	225.00	225.50	10.0	11.2	7.6	8.8
10"	250	280.00	280.50	12.5	14.0	9.6	11.0
12"	300	330.00	330.60	14.5	16.2	11.2	13.3

# uPVC Plumbing Pipes & Fittings



## uPVC Plumbing Pipes & Fittings



### Properties :

- ▶ Suitable for potable water supply
- ▶ Properties remains unchanged till temperature 60°C continuous and 90°C for short time
- ▶ Light weight makes easy handling, transportation & installation
- ▶ Seamless, strong, flexible & resilient
- ▶ Odorless and hygienic for potable water
- ▶ High flow characteristics
- ▶ Good insulator
- ▶ Simple and leak proof joints
- ▶ Lead free

### Applications :

- ▶ Cold water supply in building construction
- ▶ Industrial process lines
- ▶ Swimming pools
- ▶ Salt water lines
- ▶ Aggressive / corrosive fluid transportation
- ▶ Dye plants, chrome, zinc plating and tanning plants
- ▶ Sugar, paper and distillery industries
- ▶ Coal washing and ash handling

Product Name : Plumbing Pipe  
 Range : 15 mm to 50 mm, schedule 40 & 80  
 Standard : ASTM-D-1785  
 Colour : White  
 Length : Available in 3 & 6 meter  
 Types : Plain ended

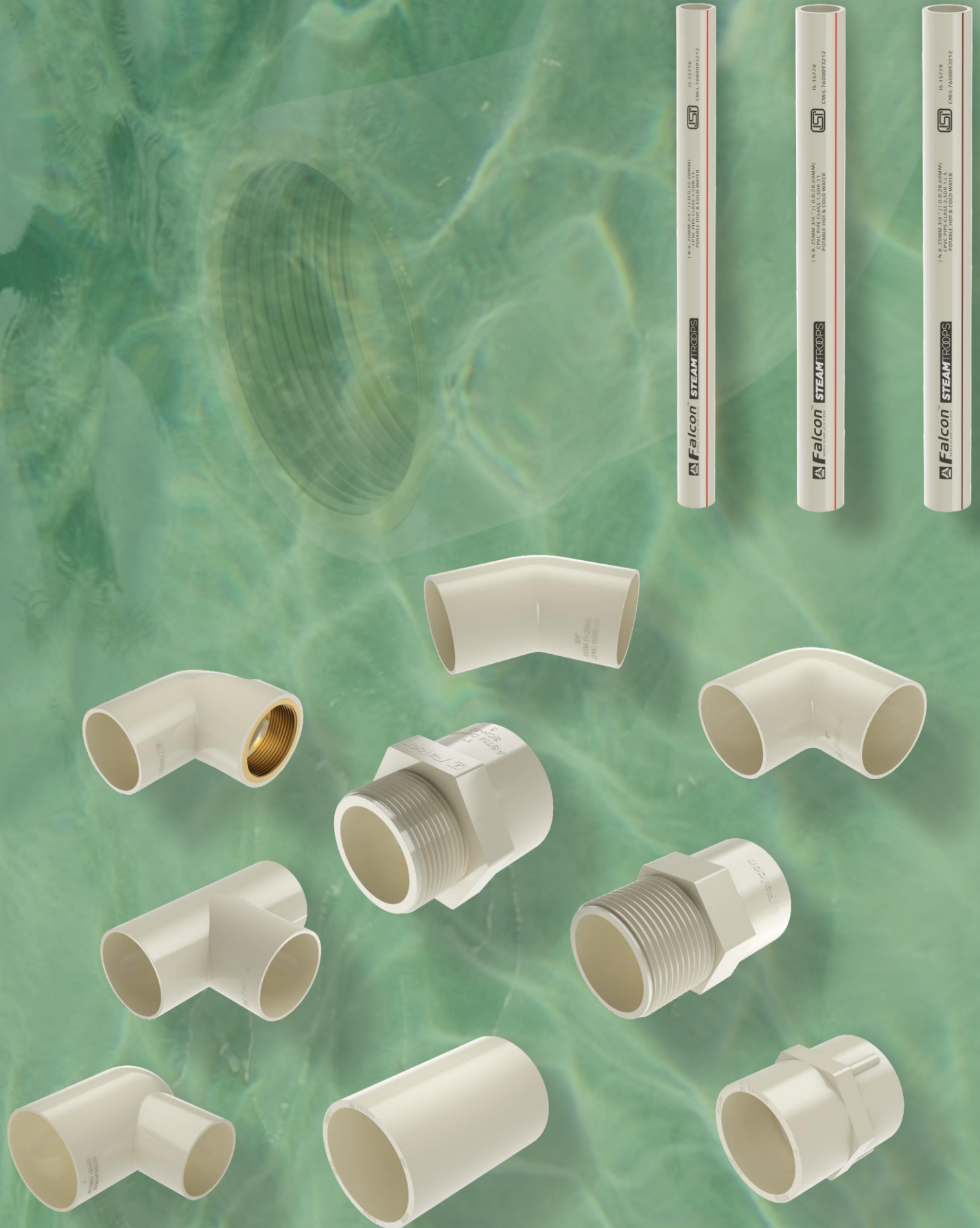
### Technical Parameters of uPVC Plumbing Pipes

Nominal Diameter		Outside Diameter (mm)		Wall thickness (mm)			
inch	mm			Schedule 40		Schedule 80	
1/2"	15	21.34	± 0.10	2.77	+ 0.51	3.73	+ 0.51
3/4"	20	26.67	± 0.10	2.87	+ 0.51	3.91	+ 0.51
1"	25	33.40	± 0.13	3.38	+ 0.51	4.55	+ 0.53
1 1/4"	32	42.16	± 0.13	3.56	+ 0.51	4.85	+ 0.58
1 1/2"	40	48.26	± 0.15	3.68	+ 0.51	5.08	+ 0.61
2"	50	60.32	± 0.15	3.91	+ 0.51	5.54	+ 0.66

# CPVC

## Pipes & Fittings

**STEAMTROOPS**







### Salient Features & Benefits :

- ▶ Proven Hot Water performance upto 93°C
- ▶ Safe for drinking water and human health
- ▶ Exceptional all weather corrosion resistance
- ▶ No scaling or pitting maintain flow
- ▶ Low microbial growth
- ▶ does not support combustion
- ▶ UV resistance ensures pressure and temperature bearing capability unaffected even after long term exposure
- ▶ Low thermal expansion
- ▶ High Impact resistance
- ▶ Fast and Easy installation
- ▶ Consistent and reliable jointing
- ▶ Very low lifetime ownership cost

### Applications :

- ▶ Hot and Cold water distribution in residential, Commercial and Industrial Spaces
- ▶ Hotels, Hospitals, Swimming Pools and RO & DM Water plants
- ▶ Carrying Potable Water and edible fluids
- ▶ Transportation of Chemicals and other hot, corrosive fluids
- ▶ Solar heating, Central heating and radiant floor heating application

Product Name : CPVC Pipe

Range : 15 mm to 50 mm, SDR : 13.5 & 11

Standard : IS 15778

Colour : Yellow

Length : Available in 3 meter

Types : Plain ended

### Technical Parameters of CPVC Pipes (SDR 11 Class-1)

Nominal Bore		Outside Diameter (mm)		Wall thickness (mm)		Pressure at 27° C		Pressure at 82° C		Packing Qty. Nos.
inch	mm	Average	Tolerance	mm	Tolerance	kg/cm <sup>2</sup>	MPA	kg/cm <sup>2</sup>	MPA	
½"	15	15.90	± 0.10	1.95	± 0.25	27.6	2.76	6.8	0.68	50
¾"	20	22.20	± 0.10	2.25	± 0.25	27.6	2.76	6.8	0.68	40
1"	25	28.60	± 0.10	2.85	± 0.25	27.6	2.76	6.8	0.68	25
1 ¼"	32	34.90	± 0.10	3.45	± 0.25	27.6	2.76	6.8	0.68	15
1 ½"	40	41.30	± 0.10	4.05	± 0.25	27.6	2.76	6.8	0.68	10
2"	50	54.30	± 0.10	5.20	± 0.30	27.6	2.76	6.8	0.68	7

### Technical Parameters of CPVC Pipes (SDR 13.5 Class-2)

Nominal Bore		Outside Diameter (mm)		Wall thickness (mm)		Pressure at 27° C		Pressure at 82° C		Packing Qty. Nos.
inch	mm	Average	Tolerance	mm	Tolerance	kg/cm <sup>2</sup>	MPA	kg/cm <sup>2</sup>	MPA	
½"	15	15.90	± 0.10	1.65	± 0.25	21.8	2.18	5.5	0.55	50
¾"	20	22.20	± 0.10	1.95	± 0.25	21.8	2.18	5.5	0.55	40
1"	25	28.60	± 0.10	2.36	± 0.25	21.8	2.18	5.5	0.55	25
1 ¼"	32	34.90	± 0.10	2.85	± 0.25	21.8	2.18	5.5	0.55	15
1 ½"	40	41.30	± 0.10	3.85	± 0.25	21.8	2.18	5.5	0.55	10
2"	50	54.30	± 0.10	4.25	± 0.25	21.8	2.18	5.5	0.55	7

# SWR Pipes & Fittings



160 mm O.D. SWR uPVC PIPES



140 mm O.D. SWR uPVC PIPES





### Salient Features & Benefits :

- ▶ Superior Quality standards and wide range
- ▶ Extra Stronger and longer lasting
- ▶ Free from Chemical and corrosion resistance
- ▶ Greater resistance to Ultra Violet (UV) degradation
- ▶ Light in weight, thus reducing transportation, handling and installation costs
- ▶ Quick and productive removal of waste without leakages
- ▶ Trouble free functioning saves on inspection and maintenance costs
- ▶ Cost Effective

### Applications :

- ▶ It is suitable for soil, waste and rain water.
- ▶ It is used to maintain the flow of waste and rain water in the individual houses, high-rise building, complexes etc.
- ▶ It is also suitable to drain out the industrial wastage in chemical plants, sugar plants, milk and food processing plants
- ▶ It work as best alternative to the asbestos cement and cast iron systems as they are light in weight and easy to install

Product Name : SWR Pipes  
 Range : 63 mm to 160 mm Outer Diameter  
 Standard : ISI 13592  
 Colour : Light Grey  
 Length : Available in 6 meter  
 Types : (1) Plain ended (2) Grooved socket (3) Socketed pipe for solvent cement jointing

### Technical Parameters of SWR Pipes

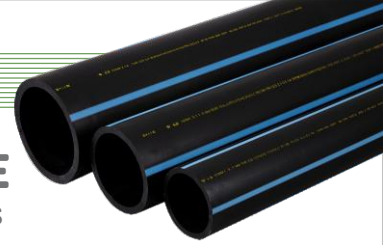
Nominal Outside Diameter DN		Mean Outside Diameter (mm)		Outside Diameter at Any Point (mm)		Wall Thickness (mm)			
inch	mm	Min.	Max.	Min.	Max.	Type - A		Type - B	
						Min.	Max.	Min.	Max.
2"	63	63	63.3	62.2	63.8	1.8	2.2	3.2	3.8
2½"	75	75	75.3	74.1	75.9	1.8	2.2	3.2	3.8
3"	90	90	90.3	88.9	91.2	1.9	2.3	3.2	3.8
4"	110	110	110.4	108.6	111.4	2.2	2.7	3.2	3.8
5"	140	140	140.5	138.3	141.7	2.9	3.4	3.2	3.8
6"	160	160	160.5	158.0	162.0	3.2	3.8	3.2	3.8

### Technical Parameters of Grooved Sockets

Nominal Outside Diameter DN		Inside Diameter of Socket, D <sub>1</sub> (mm)		Inside Diameter of Beading, D <sub>2</sub> (mm)		Length of Beading and Neck A	Neck of Socket B	Length Beyond Beading
inch	mm	Min.	Max.	Min.	Max.	Min.	Max.	Min.
2"	63	63.3	64.1	72.9	73.9	18	5	23
2½"	75	75.3	76.4	84.5	85.5	20	5	25
3"	90	90.3	91.4	99.5	100.5	23	5	28
4"	110	110.4	111.6	120.3	121.3	26	6	32
5"	140	140.5	138.3	141.7	2.9	3.4	5	28
6"	160	160.5	161.5	173.8	175.0	32	9	42

# HDPE Pipes





## Salient Features & Benefits :

- ▶ Manufactured from world class HDPE raw material
- ▶ Easy installation and lower cost
- ▶ Light weighted
- ▶ UV resistant
- ▶ Flexible and wear resistant
- ▶ Corrosion resistant
- ▶ High-pressure resistant
- ▶ Available in all sizes from 20 mm - 200 mm
- ▶ Also available in cut-length
- ▶ Standard length - 200, 300, 500 meters
- ▶ As per IS 4984 : 2016

## Advantages of Falcon HDPE Pipes over GI (Galvanized Iron) Pipes

- ▶ Flexible hence can be coiled
- ▶ Excellent corrosion resistance
- ▶ Smooth inner surface with very low friction
- ▶ 4 to 6 times lighter than GI pipes
- ▶ Easy installation with no additional equipments required
- ▶ Lower cost than GI pipes
- ▶ Long lasting and durable

Product Name : HDPE Pipes  
 Range : 32 mm to 200 mm Outer Diameter  
 Pressure Rating : 4 kg to 28 kg  
 Standard : IS 4984 (2006)  
 Colour : Black  
 Length : Available in cut length as per requirement with accessories

### Standard dimension ratio (SDR) and corresponding wall thicknesses of pipes as per IS 4984:2016

SDR	SDR 41	SDR 33	SDR 26	SDR 21	SDR 17	SDR 13.6	SDR 11	SDR 9	SDR 7.4	SDR 6														
Nominal Pressure (PN) Bar																								
PE 63	PN2	PN 2.5	PN 3.2	PN 4	PN 5	PN 6	PN 8	-	-	-														
PE 80	PN 2.5	PN 3.2	PN 4	PN 5	PN 6	PN 8	PN 10	PN 12.5	PN 16	PN 20														
PE 100	PN 3	PN 4	PN 5	PN 6	PN 8	PN 10	PN 12.5	PN 16	PN 20	-														
Nominal OD	Min	Max	Min	Max	Min	Max	Min	Max	Min	Max	Min	Max	Min	Max	Min	Max	Min	Max	Min	Max				
20	-	-	-	-	-	-	-	-	-	-	-	-	1.9	2.2	2.3	2.6	2.7	3.1	3.4	3.8				
25	-	-	-	-	-	-	-	-	-	-	-	-	1.9	2.2	2.3	2.6	2.8	3.2	3.4	3.8	4.2	4.7		
32	-	-	-	-	-	-	-	-	-	-	-	-	1.9	2.2	2.4	2.7	2.9	3.3	3.6	4.1	4.4	4.9	5.4	6.0
40	-	-	-	-	-	-	1.9	2.2	2.4	2.7	3.0	3.4	3.7	4.2	4.5	5.1	5.4	6.0	6.7	7.5				
50	-	-	-	-	2.0	2.3	2.4	2.7	3.0	3.4	3.7	4.2	4.6	5.2	5.6	6.3	6.8	7.6	8.4	9.3				
63	-	-	-	-	2.5	2.9	3.0	3.4	3.7	4.2	4.7	5.3	5.8	6.5	7.0	7.8	8.6	9.6	10.5	11.7				
75	1.9	2.2	2.3	2.6	2.9	3.3	3.6	4.1	4.5	5.1	5.6	6.3	6.9	7.7	8.4	9.3	10.2	11.3	12.5	13.9				
90	2.2	2.5	2.8	3.2	3.5	4.0	4.3	4.8	5.3	5.9	6.7	7.5	8.2	9.1	10.0	11.1	12.2	13.5	15.0	16.6				
110	2.7	3.1	3.4	3.8	4.3	4.8	5.3	6.0	6.5	7.3	8.1	9.0	10.0	11.1	12.3	13.6	14.9	16.5	18.4	20.3				
125	3.1	3.5	3.8	4.3	4.8	5.4	6.0	6.7	7.4	8.2	9.2	10.2	11.4	12.7	13.9	15.4	16.9	18.7	20.9	23.1				
140	3.5	4.0	4.3	4.8	5.4	6.0	6.7	7.5	8.3	9.2	10.3	11.4	12.8	14.2	15.6	17.3	19.0	21.0	23.4	25.8				
160	3.9	4.4	4.9	5.5	6.2	6.9	7.7	8.6	9.5	10.6	11.8	13.1	14.6	16.2	17.8	19.7	21.7	24.0	26.7	29.5				
180	4.4	4.9	5.5	6.2	7.0	7.8	8.6	9.6	10.6	11.8	13.3	14.7	16.4	18.1	20.0	22.1	24.4	26.9	30.0	33.1				
200	4.9	5.5	6.1	6.8	7.7	8.6	9.6	10.7	11.8	13.1	14.7	16.3	18.2	20.1	22.3	24.6	27.1	29.9	33.4	36.8				

# HDPE SPRINKLER

## Pipes & Fittings



# HDPE SPRINKLER Pipes & Fittings

## Salient Features & Benefits :

- Manufactured from world class HDPE raw material
- Easy installation and lower cost
- Light weighted
- UV resistant
- Flexible and wear resistant
- Corrosion resistant
- High-pressure resistant
- Available in all sizes from 63 mm - 110 mm
- As per IS 14151

## Why Falcon Sprinkler Pipes ?

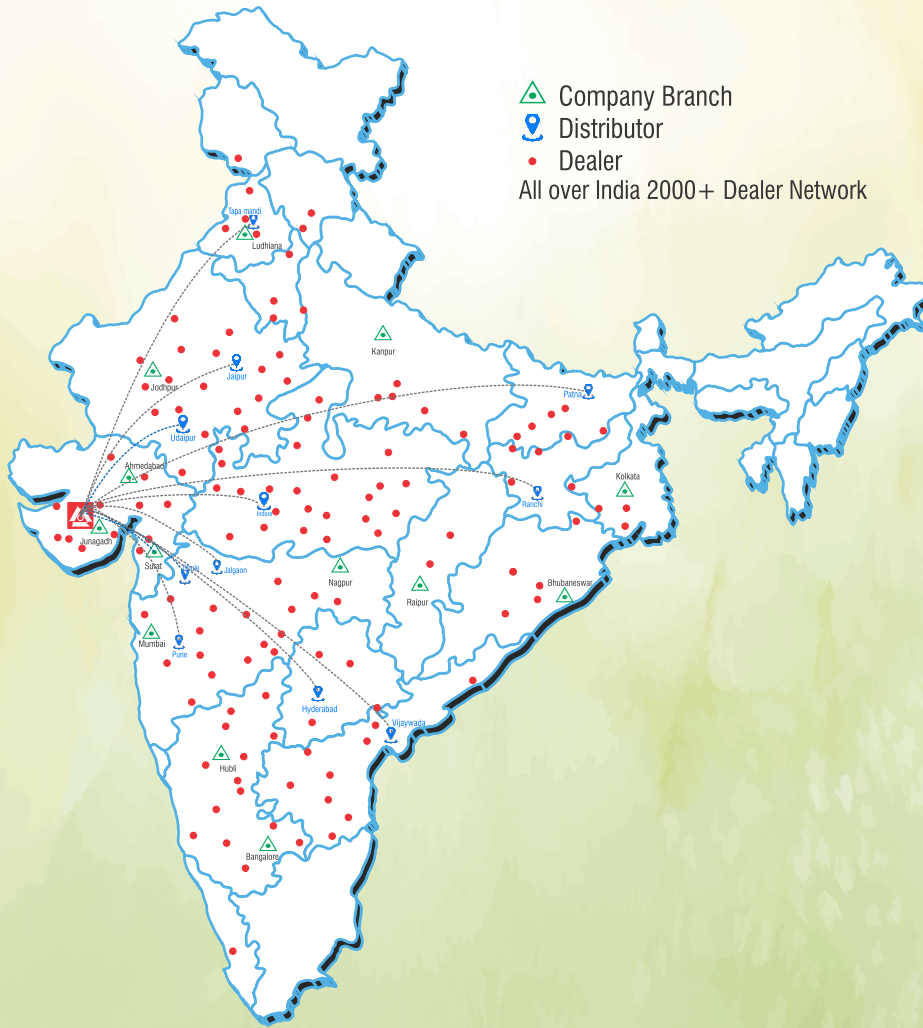
- Easy to Install , Re-joining & Shifting
- Water Saving
- Safety of Crops
- Leak Proof

- Product Name : Sprinkler Pipes
- Range : 63 mm to 110 mm Outer Diameter
- Pressure Rating : Class - 1 (2.5 kg)  
Class - 2 (3.2 kg)
- Standard : IS 14151-1 (1999)  
IS 14151-2 (2008)
- Colour : Black
- Length : Available in 6 meter

## Technical Specifications of Sprinkler Pipe

Nominal Diameter		Wall Thickness (mm)			
		Class-1 (0.25 Mpa)		Class-2 (0.32 Mpa)	
inch	mm	Min.	Max.	Min.	Max.
2"	63	-	-	2.0	2.4
2.5"	75	2.0	2.4	2.5	2.9
3."	90	2.2	2.6	2.9	3.4
4"	110	2.7	3.2	3.4	3.9

## Our Domestic Presence



## Our Global Presence



The data has been made for geographical understanding. The above map is not liable for positioning inaccuracies, subsequent updates, errors or omissions of data.



[www.falconpipes.in](http://www.falconpipes.in)

Survey No. 55/1, Village - Sadak Pipaliya, NH-27, Nr. Bharudi  
Toll Plaza, Ta. Gondal, Dist. Rajkot-360 311, Gujarat-India.

Mo.: 91 97277 00533 E-mail : [sales@falconpipes.in](mailto:sales@falconpipes.in)

CIN : U25206GJ2009PTC056721, Toll Free No. : 1800 123 0000.